

Description of the chalet La Sarrasine

Location : 557 Montée du Sarrasin, 73320 Tignes



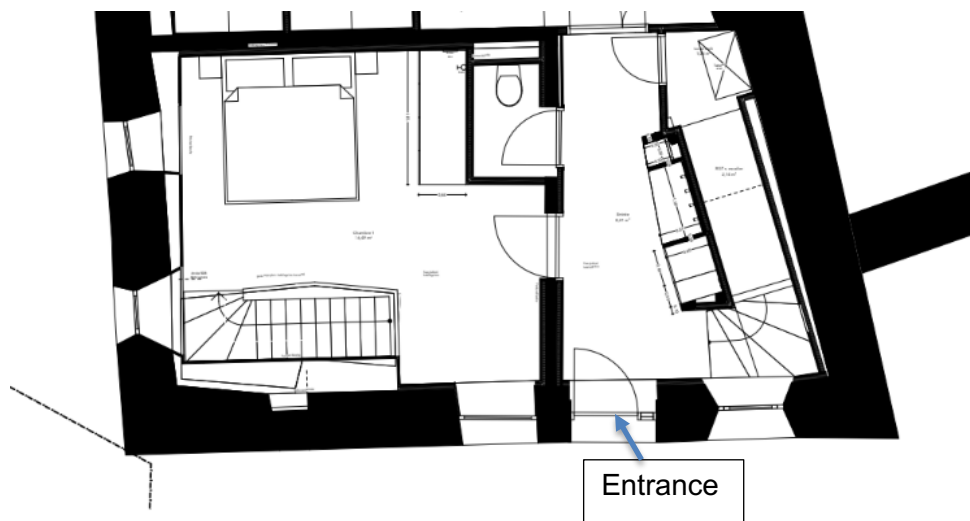
An authentic yet modern alpine chalet nestled in a traditional hamlet. Completely renovated in the winter of 2025 using eco-friendly materials and in accordance with the local heritage.

The chalet has a total floor area of 140 m² spread over three levels. It features three bedrooms, two bathrooms and a large living area with a kitchen, dining room, and living room. The interior of the chalet is primarily designed with fir wood and Italian Luzerne stone. The use of these materials creates a natural, comfortable, and modern atmosphere.

The chalet is equipped with a pellet boiler featuring underfloor and in-wall heating for optimal warmth, and the boiler is equipped with an online connection system that allows for remote heating control.

Detailed description per floor:

Ground floor:



Entrance hall with wooden lockers for storing ski gear, a coat rack, and a ski boot dryer.



Spacious room featuring a king-size bed and a large closet with two hanging sections and plenty of shelves. Smart heating system that can be controlled directly from the room.



Private bathroom accessible via a staircase in the bedroom. Located in the basement of the chalet, this bathroom was built around the room's vaulted stone structure. It features an Italian shower, a large sink, and a towel warmer.

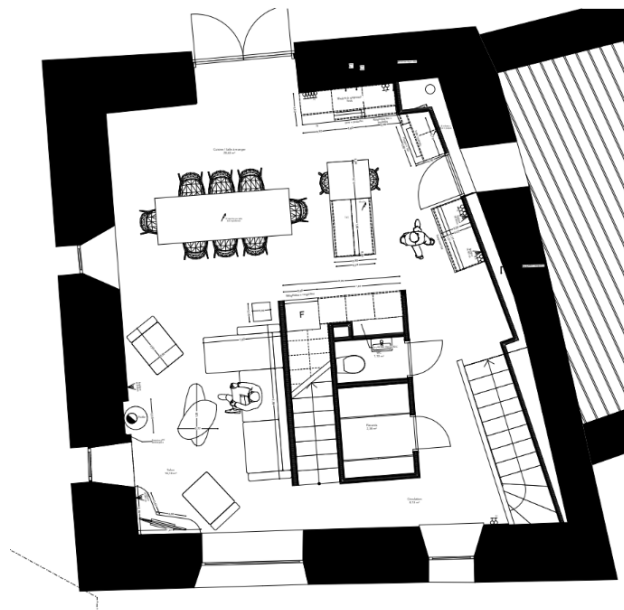


Laundry room equipped with a washing machine, a dryer, and a large sink.



Separated toilets

First floor:



Modern kitchen opens onto the living room and features a large countertop with plenty of storage space; it is fully equipped with cutlery, kitchenware, a refrigerator, a freezer, a dishwasher, an oven, a microwave, a stovetop, a coffee maker, a kettle, a toaster, a raclette machine...



Dining room with a table for 8 persons and an outside access.

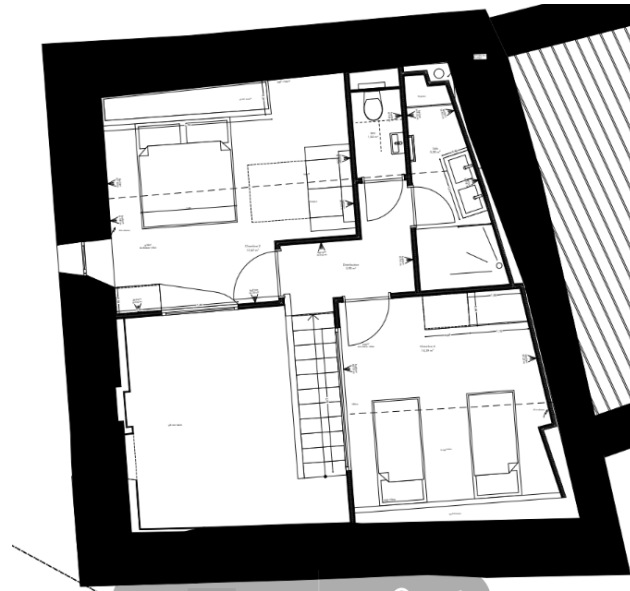


Living room with beautifully light thanks to a large window. Offers plenty of comfort with a deep sofa, a wood-burning stove, and a smart TV connected to a Sonos sound system (for movies as well as for playing music).

Separated toilets



Second floor:



Spacious room featuring a king-size bed, a sofa bed, a desk and storage shelves.



Spacious room featuring a king-size bed, and a large closet.



Bathroom located between the two bedrooms upstairs and equipped with a shower, a double sink, storage shelves, and a towel warmer.

Separated toilets



Location:

Le Villaret des Brévières is a hamlet with a unique location; situated near the resorts of Tignes and Val d'Isère (a 10-minute drive away), it remains nestled in the heart of nature on a pristine, wild mountainside at the foot of the Rocher de la Davie and facing the Dôme de la Sache. It offers a magnificent playground for beautiful snowshoe hikes or ski-touring ascents to meet the chamois.



This magical spot is perfect for those who want to enjoy the rejuvenating benefits of the mountains in a very intimate setting while still having easy access to the ski resorts!

Photos Gallery





